

TECHPRO PLUS CO.,LTD.

Motor Health Assessment Condition Monitoring and Diagnostics of Machine System



About Us

Our specialist brings over 15 years of expertise in Electrical Signature Analysis and Vibration Analysis across various industries. We utilize advanced Motor Health Assessment Technology to evaluate the condition of electric motors within facilities, enabling us to monitor and trend performance over time. This approach allows us to identify failing components before they lead to catastrophic failures, ensuring reliable motor operation and minimizing downtime.



Our Business Service



Data Analysis



Machine

Sensors



Detect

Data



Analysis

Plan



Improvement

Minimize Downtime

Cost Reduction

Increased Equipment Lifespan

Fault Identification

Data-Driven Decision Making

Contact Us

TECHPRO PLUS CO.,LTD

85/7 M.3 Banchang-Phala Buruphaphat Rd,
T.Phala, A.Banchang, Rayong 21130

Facebook :Techpro Plus

LINE Official : @Techpro

TEL : (66) 159 6398 , (66) 99 416 2247

Sales Manager

Panicha Inthiang

✉ panicha@techproplus.co.th

🌐 www.techproplus.co.th

Customer Value Creation

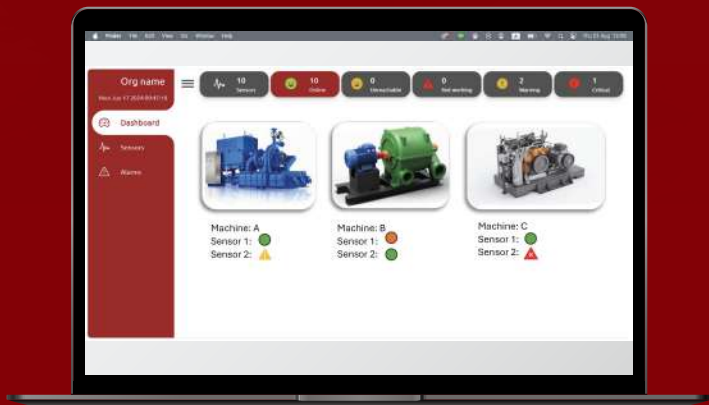
5S - Optimize Your Machinery Maintenance

-  **Smart**
Boost machinery efficiency with intelligent maintenance strategies.
-  **Saving**
Cut costs and minimize downtime with proactive upkeep.
-  **Support**
Strengthen team collaboration in maintenance tasks.
-  **Sustain**
Adopt sustainable practices in every maintenance step.
-  **Safety**
Prioritize safety in all maintenance operations.

With 5S, maintain your machinery at peak performance while saving costs and ensuring safety.



Intelligent Machinery Monitoring & Maintenance Solution



ReliMax

Intelligent Machinery Monitoring and Maintenance Solution

Streamline maintenance operations with a reliability solution that reduces unexpected failures and enhances equipment longevity.

Machine Monitoring

Motor Monitoring

Industrial AI

Smart Measurement

Brand

